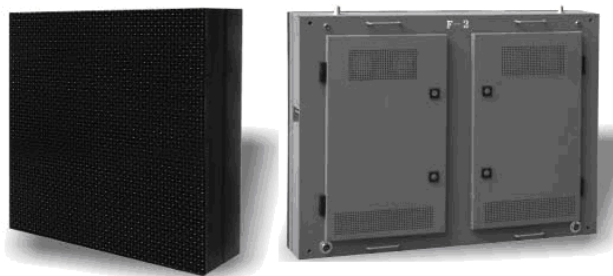




Powered By Imagination

Clean Development Group



The Clean Development Group (CDG), all rights reserved.

CDG Indoor and Outdoor Industrial Grade LED Displays When Heavy-Duty Quality is Required

Our complete line of industrial Light Emitting Diode (LED) screens (displays) is so extensive we highly recommend consulting us for details. We can hand-craft to your specific needs, whether indoor or outdoor, television size or all four sides of the Empire State building, top to bottom.

Spec Sheet

Any Size
Any Configuration
1 to over 16,000,000 colors
Indoor or outdoor
Pitch: 5mm to 40mm
Resolution: From 625 to 40,000m2
Drivers: A full range of driver options (e.g. CREE, SILAN, TW, COTCO, NICHIA)
Virtual or Real Pixels
Life Time: Approx. 100,000 hours (11.4 years)
*Once you have selected the type you require we can determine the following:
Power Consumption
Weight
Brightness
Brightness Control
Grey Scale Rectification
Colors
View Distance
View Angle
Drive Mode
Refresh Rate
Control Mode
Operating Temperature
Humidity
File Types
Weatherproofing
Power Input
Warranty



Parts
Control Unit
Accessories and Spare Parts
Installation and so on

Price: \$ based upon model and units required

To inquire and place orders:

Website: www.cdgenergy.com

Email: Products - cdg@cdgenergy.com Services – scott@cdgenergy.com

Telephone: 1 888 536-5335 or (705) 457-9697

The CDG is a world leader in providing answers to sustainable growth and management, whether for international organizations, governments, industry or home. The CDG provides a broad range of remarkable and useful products and services for daily life. The reason our quality is obtainable at superior pricing is directly related to the fact that we want it to be and we do it all ourselves, providing our products and services directly to you. We are here to provide the entire world with sustainable technology and project development - working with the planet, not against it. No excessive retailer mark-ups, no mediocre quality, no gimmicks.

We've landed!

